

SCHRIEFER

Red Angus

Saturday

January 27th, 2024

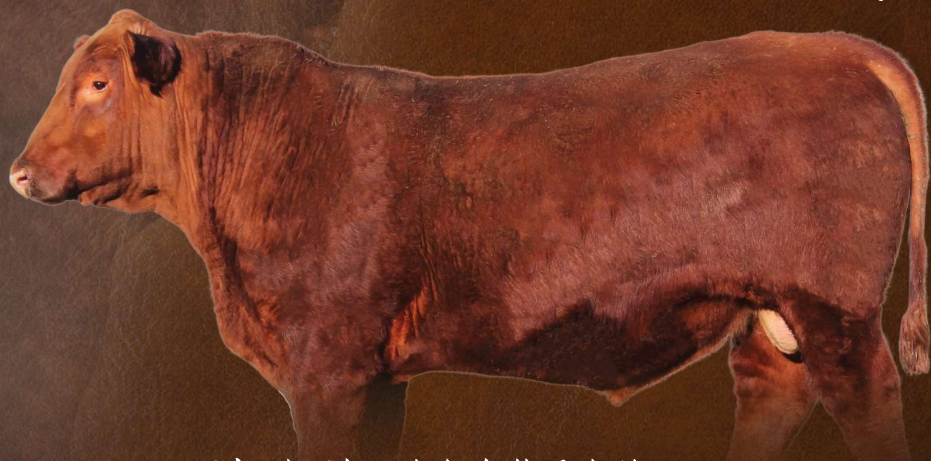
2:00 PM CST

at Schriefer Ranch, Golden Valley, ND

29 *two yr old virgin bulls*

5 *registered bred heifers*

75 *commercial open heifers*



Watch videos of the bulls & heifers at
SchrieferRedAngus.com

2 YEAR OLD BULLS



DVAuction

Broadcasting Real-Time Auctions



Photos continue on
pages 19 and 20 →

WELCOME

*to the Schriefer Ranch Red Angus
Annual Production Sale*

It's hard to believe its bull sale season already! As we prepare for this upcoming sale, the weather has been in the 40's, the early snow is gone, and our chores have been so much easier than when the winter's grip is cold and tight! We are thankful for our blessings and have a deep appreciation and faith in God, whom always has provided for mankind!

We would like to invite you to our Annual Production Sale at our ranch facilities. Our offering is a balanced blend of genetics that will perform well in all sectors of our beef industry. We are confident in our cattle, and we remain committed to the maternal strength of the Red Angus female as well as the feedlot and carcass merit that our bloodlines have to offer. We are encouraged by the continuing interest from the feed-yards that have been feeding our cattle, as well as those of our customers. We know our cattle can fit into demanding parameters. Whether it is a fertile, productive, and sound female in the herd or a load of steers that will make harvest weight at 15 months of age and grade 90% choice or better, our genetics will work for you!

Our dedication to raising correct, functional, and efficient cattle has never wavered! We do not creep feed or push our weaned replacement cattle to the upper limits of gain. Our feeding regimen is to allow the cattle to express their genetic potential but not sour their structure or attitudes. Good temperament has a high priority in our herd, and we continue to work our cattle with horses, atvs, and on foot to expose them to what they may see on your ranch.

We always like to be progressive in the management of our herd. This past year, we have been proactive in finding new herd sires, starting an embryo program, and using new cattle management software. Forward progress isn't always easy, but it's a charge that we take seriously here. We are trying to be the best stewards of the cattle and land that God has entrusted to our care!

We welcome your attendance at this sale and if you want to preview the cattle, they are available anytime for viewing at the ranch. Check our website, **SchrieferRedAngus.com**, for photos, videos, and any sale updates. Thank-you and God bless you!

The Schriefer's



*"Trust in the Lord and do
good, do good in the land
and enjoy safe pasture"*
Psalm 37:3

SCHRIEFER RANCH RED ANGUS PRODUCTION SALE

Saturday, January 27th, 2024 2:00 PM CST



*Complimentary Lunch: Noon to 2 PM CST
Schriefer Ranch - 321 70th Ave SW, Golden Valley, ND*

SALE DAY PHONE

Riley **701-870-2609**

Jodi **701-870-2790**

Marc **701-870-4292**

AUCTIONEER

Scott Weishaar

Cell **701-426-6826**

Home **701-872-5299**

LIVESTOCK REPRESENTATIVES

Rachael Oliver, Red Angus Assn. of America.....**406-480-1569**

Scott Ressler, Stockmen's Assn.....**701-391-7310**

Scott Bachmeier, Dakota Farm and Ranch director.....**701-425-6651**

Dakota Prairie Outdoors

INSURANCE

Insurance will be available for purchase on the day of the sale. Schriefer Ranch LLC will cost share 50% of the premium for the basic mortality policy if taken out on sale day. All buyers assume risk of the animal upon purchase and are encouraged to purchase insurance. **Martin-Trudeau Insurance: 605-993-1306**

VIDEOS/VIEWING

Videos are available at: DVAuction.com, SchrieferRedAngus.com, and Schriefer Red Angus Facebook page. We welcome and encourage everyone to view sale animals at our ranch anytime at your convenience.

CATTLE REGISTRATION/SEMEN RIGHTS

All purebred animals are registered with Red Angus Association of America (RAAA) and are sold with transferable registrations. Schriefer Ranch LLC reserves the right of 50% interest of saleable semen on all the bulls.

GENOMIC TESTING/EPD's

All our RAAA registered cattle have been GGP (DNA) tested for increased EPD accuracy and parent verification. We encourage you to check for updated EPD's at Redangus.org. Please note the breed rankings for each EPD for each sale lot to assist in your buying decisions.

SEMEN/PREGNANCY TESTING

Sale bulls have passed a breeding soundness and semen quality exam performed by Square Butte Veterinary Services. The bred heifers have been veterinary PG-tested and confirmed safe with calf at time of sale. All bulls are sold as guaranteed breeders. Open heifer calves will be bangs vaccinated and vet-checked open and breed-able prior to sale day. See additional notices under terms/conditions below.

BASE PRICE

All bulls will have a minimum price of \$3000 on sale day. Bidding will begin at this base price.

SALE TERMS/CONDITIONS

Terms of the sale are cash unless other prior arrangements have been made and will be conducted under the standard terms and conditions recommended by RAAA and are available for viewing on the Redangus.org website. All bidding disputes will be settled by auctioneer at the time of sale and any announcements from the block will take precedence over any printed materials. As stated before, all bulls are sold as guaranteed breeders. If, in fact, there is evidence that a bull is not a breeder, the buyer may obtain a statement from a licensed veterinarian indicating that there has been no injury or illness to the animal following the sale and return the bull to the seller for adjustment. Adjustment will be made either substituting a bull of equal value, by refund of full purchase price less salvage value, or credit of full purchase price less salvage value, all subject to Seller's opinion. All sale animals are assumed property of the buyer immediately at the time of sale.

LIABILITY

Everyone attending this sale does so at their own risk. Schriefer Ranch LLC assumes no liability or legal responsibility for any accidents or mishaps.

DELIVERY

\$100 CASH rebate per bull if taken home on sale day or picked up within 7 days (February 3, 2024). Bred heifers and open heifer calves are buyer's responsibility for transport on or before February 6, 2024. \$3/hd/day feed bill thereafter. Seller will assist with load out. Free delivery on all bulls up to 500 miles to central locations beginning February 20, 2024. All attempts will be made to deliver bulls before April 1st. We will work with buyer's arrangements for delivery to greater than 500-mile destinations.

EMAIL: marcjodi@icloud.com, rschriefer@outlook.com

WEBSITE: SchrieferRedAngus.com

ADDITIONAL PHONE NUMBER

Marc & Jodi Schriefer Home **701-983-4292**

Red Angus Guide to EPDS and Indexes

ProS ... Profitability and Sustainability is an all-purpose index that predicts average economic differences in all segments in the beef supply chain. This index is a combination of the breeding objectives modeled in the HerdBuilder and GridMaster selection indexes. In this index, replacement heifers are retained from within the herd and all remaining progeny are fed out to slaughter and sold on a quality-based grid. Traits included in this index include calving ease, growth, HPG, STAY, Mature Weight, Dry Matter Intake and carcass traits. The resulting index is expressed in dollars per head born (Index/High Value).

CED Calving Ease Direct predicts differences in the percent of calves born unassisted out of 2-year-old dams. (Percent/High Value)

BW Birth Weight predicts differences in actual birth weight of progeny. (Pounds/Low Value)

WW Weaning Weight predicts differences in 205-day weaning weight. (Pounds/High Value)

YW Yearling Weight predicts differences in 365-day yearling weight. (Pounds/High Value)

ADG Average Daily Gain predicts differences in weight gain between 205 and 365 days of age. (Pounds/High Value)

DMI Dry Matter Intake predicts differences in daily feed intake as measured in a feedlot during the post-weaning period. (Pounds/Low Value)

MILK Milk predicts differences in weaning weight attributed to the milking ability of the animal's daughters. (Pounds/High Value)

HPG Heifer Pregnancy predicts differences in the percent of daughters who are able to conceive and calve at 2 years of age following exposure to breeding. (Percent/High Value)

HB HerdBuilder is a maternal selection index that predicts the economic differences of animals for traits that are important from conception through weaning. Expressed as dollars per head born, HB is calculated based on the scenario that bulls are mated to heifers and cows, replacement heifers are retained and all remaining progeny are marketed at weaning. Traits included in the HB index include Calving Ease Direct, Calving Ease Maternal, Weaning Weight, Milk, Mature Weight, Heifer Pregnancy and Stayability (Index/High Value).

CEM Calving Ease Maternal predicts differences in the percent of daughters who are able to calve unassisted as 2-year-old heifers. (Percent/High Value)

STAY Stayability predicts differences in the ability of an animal's retained daughters to remain productive in the herd – calve every year – through 6 years of age. (Percent/High Value)

MARB Marbling predicts differences in marbling score – amount of intramuscular fat measured at the 13th rib. (Marbling Score Units/High Value)

YG Yield Grade predicts differences in USDA Yield Grade, which is calculated using CW, REA and Fat. (Yield Grade Units/Low Value)

CW Carcass Weight predicts differences in actual hot carcass weight. (Pounds/High Value)

REA Ribeye Area predicts differences in square inches of ribeye area measured at the 13th rib. (Square Inches/High Value)

FAT Fat predicts differences in the depth of backfat measured between the 12th and 13th ribs. (Inches/Low Value)

CALVING EASE LEGEND

Calving Ease is often related to birth weight of a bull. This is partly true but there are other factors that influence calving ease. The dam and her management are at least 50% of calving ease. Also, the consistency of the birth weights of the sire and dam should be considered. Nutrition, gestation and environment all influence birth weight. We have rated each bull in the sale based on the information we have.

- Should produce minimal problems when bred to breed-able heifers.
- Recommend for larger frame heifers, second calvers or small framed cows.
- Recommend for mature cows



REFERENCE SIREs

A FEDDES BOURNE C31-9247 #4124430

B CBR PREBANK 070-6100 #4299257

C DKK BRILLANT 8115 #3906129

D KUHNS DEFENDER D043 #3546130

E SMJ OSCAR JULIAN C811 #3477367

F SMJ PM RAMBO G801 #4147496

G SPR POLISHED PRODUCT #4348389

H SMJ BL RUMBLER F299 #3965895

I SMJ OSCAR 811L BL G250 #4147588

J SMJ LONG ACTION E306 #3762639

K SMJ PM IMP G300 #4147574

Breed Averages for Proven and Opportunity Sires


Pro\$	HB	GM	CED	BW	WW	YW	MILK	ME	HPG	CEM	STAY	Marb	YG	CW	REA
89	53	35	13	-1.8	62	100	25	4	12	7	15	0.4	0.07	23	0.11

2 YEAR OLD BULLS

LOT 1

SMJ POLISHED PRODUCT PM K323 #4652327

BD		Cat.		%		Tattoo		Dam's MPPA		Dam's Age					
04-01-2022		1A		100		K323		99		2					
Pro\$	HB	GM	CED	BW	WW	YW	MILK	ME	HPG	CEM	STAY	Marb	YG	CW	REA
124	67	58	13	-0.3	70	122	25	6	14	9	16	0.47	0	34	0.34
8%	21%	15%	53%	79%	18%	8%	60%	69%	15%	22%	38%	38%	19%	16%	14%

												COLLIER FINISHED PRODUCT		Calving Ease	**
												SPR POLISHED PRODUCT 0046		BW	91
												SPR MISS STACK THE DRAW 6002		WW	663
												SMJ POLISHED PRODUCT PM K323		Grass Gain	3.2
												BUEE PEACEMAKER 504		Scrotal	39.5
												SMJ SIERRA PM H306		Frame Score	6.0
												SMJ SIERRA FT KNIGHT D305			

LOT 2

SMJ BOURNE PM K801 #4652277

BD		Cat.		%		Tattoo		Dam's MPPA		Dam's Age					
04-06-2022		1A		100		K801		97		4					
Pro\$	HB	GM	CED	BW	WW	YW	MILK	ME	HPG	CEM	STAY	Marb	YG	CW	REA
149	131	18	11	-2.4	64	109	25	3	17	7	25	0.16	0.02	16	0.3
1%	1%	87%	78%	40%	37%	27%	60%	48%	2%	42%	1%	97%	27%	79%	20%

												5L BOURNE 117-48A		Calving Ease	**
												FEDDES BOURNE C31-9247		BW	79
												FEDDES BLOCKANA Y63-C31		WW	576
												SMJ BOURNE PM K801		Grass Gain	2.4
												BUEE PEACEMAKER 504		Scrotal	42.5
												SMJ INA CBB PM F802		Frame Score	5.1
												RSMJ INA MCR BB X801			

LOT 3

SMJ BOURNE IMPECCABLE K300 #4652247

BD		Cat.		%		Tattoo		Dam's MPPA		Dam's Age					
04-14-2022		1A		100		K300		102		6					
Pro\$	HB	GM	CED	BW	WW	YW	MILK	ME	HPG	CEM	STAY	Marb	YG	CW	REA
102	58	44	7	0.5	81	133	27	12	16	3	18	0.35	0.1	42	0.38
30%	36%	38%	98%	89%	2%	2%	43%	93%	4%	98%	16%	67%	69%	4%	10%

												5L BOURNE 117-48A		Calving Ease	*
												FEDDES BOURNE C31-9247		BW	93
												FEDDES BLOCKANA Y63-C31		WW	728
												SMJ BOURNE IMPECCABLE K300		Grass Gain	2.2
												LSF SRR IMPECCABLE 3150A		Scrotal	39.0
												SMJ BELLE CBB IMP D303		Frame Score	5.9
												SMJ BELL CC BB X301			

2 YEAR OLD BULLS

LOT 4 SMJ CAPTAIN DEFEND K312 #4652275

	BD	Cat.	%	Tattoo	Dam's MPPA	Dam's Age									
	05-01-2022	1A	100	K312	102	4									
Pro\$	HB	GM	CED	BW	WW	YW	MILK	ME	HPG	CEM	STAY	Marb	YG	CW	REA
106	72	34	9	0.7	79	134	28	13	12	6	20	0.17	0.02	41	0.25
25%	14%	59%	92%	91%	4%	2%	28%	95%	44%	72%	4%	96%	26%	5%	27%

	DKK CAPTAIN 434	Calving Ease	*
	DKK BRILLIANT 8115	BW	81
	DKK STARLETTE 320	WW	754
	SMJ CAPTAIN DEFEND K312	Grass Gain	2.6
	KUHNS DEFENDER D043	Scrotal	39.0
	SMJ DENISE RAMBO OS811 F312	Frame Score	6.5
	SMJ RAMBO MONU 4X U250		

LOT 5 SMJ TRENDSETTER K313 #4652223

	BD	Cat.	%	Tattoo	Dam's MPPA	Dam's Age									
	04-10-2022	1A	100	K313	102	8									
Pro\$	HB	GM	CED	BW	WW	YW	MILK	ME	HPG	CEM	STAY	Marb	YG	CW	REA
125	73	53	7	0.6	73	121	26	6	17	5	17	0.4	0.04	37	0.44
7%	14%	22%	97%	90%	12%	10%	48%	64%	2%	82%	24%	54%	34%	9%	6%

	5L BOURNE 117-48A	Calving Ease	*
	FEDDES BOURNE C31-9247	BW	93
	FEDDES BLOCKANA Y63-C31	WW	720
	SMJ TRENDSETTER K313	Grass Gain	2.5
	MCGEE MISSION 102	Scrotal	42.0
	SMJ CARLY RAMBO MS B310	Frame Score	4.9
	SMJ RAMBO RR T289		

LOT 6 SMJ BOURNE COMMITMENT K325 #4652291

	BD	Cat.	%	Tattoo	Dam's MPPA	Dam's Age									
	04-13-2022	1A	100	K325	103	3									
Pro\$	HB	GM	CED	BW	WW	YW	MILK	ME	HPG	CEM	STAY	Marb	YG	CW	REA
127	96	31	7	0	71	112	26	2	15	4	22	0.52	0.12	18	-0.03
6%	1%	65%	98%	83%	17%	21%	52%	45%	5%	94%	1%	29%	77%	73%	84%

	5L BOURNE 117-48A	Calving Ease	*
	FEDDES BOURNE C31-9247	BW	85
	FEDDES BLOCKANA Y63-C31	WW	786
	SMJ BOURNE COMMITMENT K325	Grass Gain	2.1
	BROWN COMMITMENT S7206	Scrotal	40.0
	SMJ CARECE CROWFOOT COMMG318	Frame Score	5.6
	CBR RED MAXINE 8554-1200		


2 YEAR OLD BULLS

LOT 7

SMJ DEFENDER BL K296

#4652263

BD		Cat.		%		Tattoo		Dam's MPPA		Dam's Age					
04-30-2022		1A		100		K296		100		5					
Pro\$	HB	GM	CED	BW	WW	YW	MILK	ME	HPG	CEM	STAY	Marb	YG	CW	REA
122	81	41	11	-2.7	65	97	24	6	14	4	21	0.62	-0.03	22	0.25
9%	7%	44%	76%	34%	34%	53%	66%	63%	14%	94%	2%	15%	10%	57%	27%

	5L DEFENDER 560-30Z	Calving Ease	**
	KUHNS DEFENDER D043	BW	81
	KUHNS BOND GIRL Z067	WW	704
	SMJ DEFENDER BL K296	Grass Gain	2.2
	BHR BASES LOADED 5213	Scrotal	32.5
	SMJ BELLE CBB BL E302	Frame Score	5.2
SMJ BELLE CC CBB Z301			

LOT 8

SMJ BANKABLE BL K303

#4652289

BD		Cat.		%		Tattoo		Dam's MPPA		Dam's Age					
04-04-2022		1B		99.9		K303		100		3					
Pro\$	HB	GM	CED	BW	WW	YW	MILK	ME	HPG	CEM	STAY	Marb	YG	CW	REA
134	109	26	11	-1.3	73	114	26	9	14	6	24	0.4	0.09	27	0.14
4%	1%	76%	76%	61%	12%	17%	52%	82%	13%	66%	1%	54%	60%	36%	49%


	CBR BANKABLE 4264-7278	Calving Ease	*
	CBR PREBANK 070-6100	BW	71
	CBR CLARA 8504-6100	WW	749
	SMJ BANKABLE BL K303	Grass Gain	2.3
	BHR BASES LOADED 5213	Scrotal	39.0
	SMJ ALICE CBB BL G253	Frame Score	5.0
SMJ ALICE HEAVEN BB W254			

LOT 9

SMJ BANKABLE RUMBLER K299

#4652215

BD		Cat.		%		Tattoo		Dam's MPPA		Dam's Age					
03-22-2022		1B		99.9		K299		102		11					
Pro\$	HB	GM	CED	BW	WW	YW	MILK	ME	HPG	CEM	STAY	Marb	YG	CW	REA
99	91	8	10	0.2	61	84	27	15	8	6	26	0.31	0.03	20	0.03
36%	2%	96%	88%	86%	50%	77%	43%	97%	93%	76%	1%	76%	31%	64%	73%

	CBR BANKABLE 4264-7278	Calving Ease	*
	CBR PREBANK 070-6100	BW	85
	CBR CLARA 8504-6100	WW	651
	SMJ BANKABLE RUMBLER K299	Grass Gain	2.4
	CBR RUMBLER 116-7140	Scrotal	41.0
	SMJ ERNA MY DAY RUMBLER Y604	Frame Score	5.5
CSMJ DAY ERNA N601			

2 YEAR OLD BULLS

LOT 10

SMJ 300PM FREEMONT K264

#4652343

	BD	Cat.	%	Tattoo	Dam's MPPA	Dam's Age									
	04-16-2022	1B	99.9	K264	101	7									
Pro\$	HB	GM	CED	BW	WW	YW	MILK	ME	HPG	CEM	STAY	Marb	YG	CW	REA
129	85	44	8	0.4	61	99	26	7	12	4	23	0.56	0.04	20	0.28
5%	4%	38%	97%	88%	49%	49%	45%	71%	39%	97%	1%	22%	35%	67%	22%

	BUEE PEACEMAKER 504	Calving Ease	*
	SMJ PM IMP G300	BW	90
	SMJ BELLE CBB IMP D303	WW	713
	SMJ 300PM FREEMONT K264	Grass Gain	2.5
	CRUMP FREMONT 299	Scrotal	37.0
	SMJ ALICE CBB CA C253	Frame Score	4.9
	SMJ ALICE HEAVEN BB W254		

LOT 11

SMJ ULTIMATE PINNACLE K252

#4652243

	BD	Cat.	%	Tattoo	Dam's MPPA	Dam's Age									
	03-22-2022	1B	99.9	K252	111	6									
Pro\$	HB	GM	CED	BW	WW	YW	MILK	ME	HPG	CEM	STAY	Marb	YG	CW	REA
102	60	42	11	-0.6	76	122	28	3	11	7	15	0.42	0.09	31	0.09
31%	33%	42%	78%	74%	7%	8%	28%	47%	47%	60%	42%	49%	65%	24%	62%

	BROWN ULTIMATE X7752	Calving Ease	*
	SMJ ULTIMATE CM G315	BW	75
	SMJ ABBEY RAMBO MAGNUM D315	WW	724
	SMJ ULTIMATE PINNACLE K252	Grass Gain	2.5
	KCC PINNACLE 949-109	Scrotal	39.5
	SMJ ALICE CBB PINNACLE D253	Frame Score	6.0
	SMJ ALICE HEAVEN BB W254		

LOT 12

SMJ CAPTAIN 316 K74

#4652341

	BD	Cat.	%	Tattoo	Dam's MPPA	Dam's Age									
	03-27-2022	1A	100	K74	100	3									
Pro\$	HB	GM	CED	BW	WW	YW	MILK	ME	HPG	CEM	STAY	Marb	YG	CW	REA
36	49	-13	10	1.2	76	128	30	7	7	7	16	-0.16	0	22	0.04
99%	56%	99%	89%	94%	7%	4%	18%	73%	98%	58%	34%	99%	17%	60%	71%

	DKK CAPTAIN 434	Calving Ease	*
	DKK BRILLIANT 8115	BW	69
	DKK STARLETTE 320	WW	659
	SMJ CAPTAIN 316 K74	Grass Gain	2.7
	SMJ IMPECCABLE SAKIC D316	Scrotal	42.0
	SMJ ABBEY CM 316IMP G809	Frame Score	6.0
	SMJ ABBEY RAMBO CM C315		

2 YEAR OLD BULLS

LOT 13

SMJ 299BL RUMBLER K374

#4652351

BD		Cat.		%		Tattoo		Dam's MPPA		Dam's Age					
03-30-2022		1B		99.9		K374		101		6					
Pro\$	HB	GM	CED	BW	WW	YW	MILK	ME	HPG	CEM	STAY	Marb	YG	CW	REA
89	76	13	9	-1.3	64	94	26	6	10	4	21	0.23	0.1	27	-0.02
51%	10%	92%	94%	61%	40%	60%	52%	64%	66%	93%	1%	91%	69%	35%	83%

BHR BASES LOADED 5213	Calving Ease	*
SMJ BL RUMBLER F299	BW	84
SMJ ERNA MY DAY RUMBLER Y604	WW	684
SMJ 299BL RUMBLER K374	Grass Gain	2.7
SMJ BUSTER RAMBO X256	Scrotal	39.5
SMJ SIERRA RUM BUSTER D308	Frame Score	5.6
SMJ SIERRA NSL RUMBLER Y305		

LOT 14

SMJ CAPTAIN ULTIMATE K812

#4652245

BD		Cat.		%		Tattoo		Dam's MPPA		Dam's Age					
04-09-2022		1A		100		K812		99		6					
Pro\$	HB	GM	CED	BW	WW	YW	MILK	ME	HPG	CEM	STAY	Marb	YG	CW	REA
97	72	25	9	1.4	79	128	23	17	12	7	20	0.31	0	26	0.29
38%	14%	77%	92%	95%	4%	5%	72%	99%	37%	62%	3%	76%	17%	41%	20%

DKK CAPTAIN 434	Calving Ease	*
DKK BRILLIANT 8115	BW	89
DKK STARLETTE 320	WW	726
SMJ CAPTAIN ULTIMATE K812	Grass Gain	3.2
BROWN ULTIMATE X7752	Scrotal	40.5
SMJ INA CBB ULTIMATE D802	Frame Score	5.6
RSMJ INA MCR BB X801		

LOT 15

SMJ LONG ACTION IMPECC K376

#4652353

BD		Cat.		%		Tattoo		Dam's MPPA		Dam's Age					
03-27-2022		1A		100		K376		97		3					
Pro\$	HB	GM	CED	BW	WW	YW	MILK	ME	HPG	CEM	STAY	Marb	YG	CW	REA
86	99	-13	13	-3.5	51	78	28	-4	13	8	21	0.33	0.15	-11	-0.55
56%	1%	99%	50%	21%	82%	85%	28%	20%	27%	30%	2%	72%	87%	99%	99%

BHR BASES LOADED 5213	Calving Ease	**
SMJ LONG ACTION E306	BW	71
SMJ SIERRA NEL COMMIT W305	WW	654
SMJ LONG ACTION IMPECC K376	Grass Gain	2.9
SMJ IMPECCABLE SAKIC D316	Scrotal	40.5
SMJ INA CBB 316IMP G802	Frame Score	5.3
RSMJ INA MCR BB X801		

2 YEAR OLD BULLS

LOT 16

SMJ 250 OSCAR CM K416

#4652357

BD		Cat.		%		Tattoo		Dam's MPPA		Dam's Age					
04-04-2022		1A		100		K416		97		5					
Pro\$	HB	GM	CED	BW	WW	YW	MILK	ME	HPG	CEM	STAY	Marb	YG	CW	REA
103	60	43	12	1.1	72	111	25	3	9	7	17	0.48	0.11	32	-0.04
30%	33%	41%	59%	93%	13%	22%	55%	46%	86%	62%	26%	36%	73%	19%	86%

SMJ OSCAR JULIAN C811												Calving Ease	**
SMJ OSCAR811 BL G250												BW	74
SMJ DENISE RAMBO BL E250												WW	646
SMJ 250 OSCAR CM K416												Grass Gain	2.2
CRUMP ULTRA MAGNUM 339												Scrotal	38.5
SMJ HARMONY RAMROD MAG E806												Frame Score	5.0
CBR COPPER QUEEN 915-1117													

LOT 17

SMJ CAPTAIN O811 K377

#4652355

BD		Cat.		%		Tattoo		Dam's MPPA		Dam's Age					
03-30-2022		1A		100		K377		96		3					
Pro\$	HB	GM	CED	BW	WW	YW	MILK	ME	HPG	CEM	STAY	Marb	YG	CW	REA
94	79	16	17	-2.4	54	89	26	0	10	10	18	0.32	-0.07	3	0.16
43%	8%	90%	9%	40%	75%	69%	46%	35%	70%	6%	10%	74%	5%	98%	45%

DKK CAPTAIN 434												Calving Ease	**
DKK BRILLIANT 8115												BW	70
DKK STARLETTE 320												WW	640
SMJ CAPTAIN O811 K377												Grass Gain	2.7
SMJ OSCAR JULIAN C811												Scrotal	38.0
SMJ JO JO JUBILEE OS811 G805												Frame Score	5.5
LELAND BANJO 4677													

LOT 18

SMJ 299 BL PINNACLE K362

#4652345

BD		Cat.		%		Tattoo		Dam's MPPA		Dam's Age					
04-03-2022		1B		99.9		K362		103		7					
Pro\$	HB	GM	CED	BW	WW	YW	MILK	ME	HPG	CEM	STAY	Marb	YG	CW	REA
101	103	-3	9	0	68	94	27	2	13	5	23	0.2	0.03	19	0.13
33%	1%	99%	93%	83%	25%	59%	44%	42%	25%	86%	1%	94%	31%	70%	51%

BHR BASES LOADED 5213												Calving Ease	*
SMJ BL RUMBLER F299												BW	83
SMJ ERNA MY DAY RUMBLER Y604												WW	697
SMJ 299 BL PINNACLE K362												Grass Gain	2.1
KCC PINNACLE 949-109												Scrotal	37.5
SMJ SIERRA RUMBLER PINN C320												Frame Score	5.5
SMJ SIERRA RUMB BUSTER A308													

2 YEAR OLD BULLS

LOT 19 Not Registered K355



Tattoo **K355** Dam's Age **4**

Calving Ease *****
 BW **74**
 WW **695**
 Grass Gain **2.2**
 Scrotal **37.0**
 Frame Score **6.1**

This bull will sell without papers. Don't be deterred and underestimate his value because of it!
 His dam is due to calve this spring and is still in production!

LOT 20 SMJ 801 PM O811 K320 #4652335

BD **03-20-2022** Cat. **1A** % **100** Tattoo **K320** Dam's MPPA **102** Dam's Age **2**

Pro\$	HB	GM	CED	BW	WW	YW	MILK	ME	HPG	CEM	STAY	Marb	YG	CW	REA
112	88	25	15	-2.3	66	105	27	3	14	9	18	0.34	0.16	21	-0.12
17%	3%	78%	18%	42%	32%	34%	38%	47%	10%	11%	11%	69%	92%	60%	94%

	BUEE PEACEMAKER 504
	SMJ PM RAMBO G801
	RSMJ RAMBO JULIET S800
SMJ 801 PM O811 K320	
	SMJ OSCAR JULIAN C811
	SMJ SIERRA O811 H320
	SMJ SIERRA BUSTER BL F320

Calving Ease *******
 BW **82**
 WW **701**
 Grass Gain **2.7**
 Scrotal **40.0**
 Frame Score **5.0**

LOT 21 SMJ DEFEND PM K802 #4652295

BD **05-07-2022** Cat. **1A** % **100** Tattoo **K802** Dam's MPPA **105** Dam's Age **3**

Pro\$	HB	GM	CED	BW	WW	YW	MILK	ME	HPG	CEM	STAY	Marb	YG	CW	REA
99	67	32	17	-3.2	68	102	29	1	11	9	16	0.39	0.02	27	0.28
35%	21%	63%	7%	26%	24%	41%	20%	37%	50%	17%	34%	57%	25%	35%	22%

	5L DEFENDER 560-30Z
	KUHNS DEFENDER D043
	KUHNS BOND GIRL Z067
SMJ DEFEND PM K802	
	BUEE PEACEMAKER 504
	SMJ INA MISSION PM G800
	SMJ INA RAMBO MS B801

Calving Ease *******
 BW **67**
 WW **773**
 Grass Gain **2.9**
 Scrotal **38.5**
 Frame Score **4.5**

2 YEAR OLD BULLS

LOT 22

SMJ 801 PM 316 K334

#4652321

BD		Cat.		%		Tattoo		Dam's MPPA		Dam's Age					
03-29-2022		1A		100		K334		93		2					
Pro\$	HB	GM	CED	BW	WW	YW	MILK	ME	HPG	CEM	STAY	Marb	YG	CW	REA
82	81	1	22	-5	50	75	27	-1	10	13	17	0.16	0.13	5	-0.18
64%	7%	99%	1%	7%	85%	88%	39%	26%	66%	1%	17%	97%	82%	97%	97%

BUEE PEACEMAKER 504	Calving Ease	***
SMJ PM RAMBO G801	BW	72
RSMJ RAMBO JULIET S800	WW	612
SMJ 801 PM 316 K334	Grass Gain	2.5
SMJ IMPECCABLE SAKIC D316	Scrotal	36.5
SMJ QUEEN 316 H322	Frame Score	4.6
SEEGER RED QUEEN 519		

LOT 23

SMJ DEFENDER CM K255

#4652233

BD		Cat.		%		Tattoo		Dam's MPPA		Dam's Age					
04-07-2022		1A		100		K255		100		7					
Pro\$	HB	GM	CED	BW	WW	YW	MILK	ME	HPG	CEM	STAY	Marb	YG	CW	REA
71	61	10	18	-5.4	55	82	28	-1	6	9	18	0.54	0.09	1	-0.27
80%	31%	95%	3%	4%	71%	81%	27%	27%	98%	20%	14%	25%	66%	99%	99%

5L DEFENDER 560-30Z	Calving Ease	***
KUHNS DEFENDER D043	BW	67
KUHNS BOND GIRL Z067	WW	632
SMJ DEFENDER CM K255	Grass Gain	2.0
CRUMP ULTRA MAGNUM 339	Scrotal	39.5
SMJ LASS CBB CM C292	Frame Score	4.6
SMJ LASS RAMBO CBB Z256		

LOT 24

SMJ 801PM O811 K327

#4652311

BD		Cat.		%		Tattoo		Dam's MPPA		Dam's Age					
03-25-2022		1A		100		K327		87		2					
Pro\$	HB	GM	CED	BW	WW	YW	MILK	ME	HPG	CEM	STAY	Marb	YG	CW	REA
124	75	48	17	-3.9	55	92	20	-2	13	9	17	0.45	0.06	16	0.06
8%	11%	29%	6%	16%	73%	64%	92%	25%	25%	12%	24%	42%	44%	79%	67%

BUEE PEACEMAKER 504	Calving Ease	***
SMJ PM RAMBO G801	BW	72
RSMJ RAMBO JULIET S800	WW	544
SMJ 801PM O811 K327	Grass Gain	2.5
SMJ OSCAR JULIAN C811	Scrotal	38.5
SMJ CARECE O811 318 H	Frame Score	5.0
CBR RED MAXINE 8554-1200		



2 YEAR OLD BULLS

LOT 25

SMJ OSCAR 811 DEFENDER K333 #4652309

BD		Cat.		%		Tattoo		Dam's MPPA		Dam's Age					
04-15-2022		1A		100		K333		101		2					
Pro\$	HB	GM	CED	BW	WW	YW	MILK	ME	HPG	CEM	STAY	Marb	YG	CW	REA
122	87	35	14	-3.5	54	81	24	-8	11	4	21	0.6	0.04	7	-0.08
9%	4%	57%	30%	21%	75%	81%	69%	13%	54%	92%	1%	18%	33%	96%	91%

FEDDES OSCAR X28		Calving Ease	***
SMJ OSCAR JULIAN C811		BW	71
TR CEDAR AT315		WW	693
SMJ OSCAR 811 DEFENDER K333		Grass Gain	2.5
KUHNS DEFENDER D043		Scrotal	39.0
SMJ BELLE DEFEND H303		Frame Score	4.4
SMJ BELL CC BB X301			

LOT 26

SMJ 801 PM PM K811 #4652317

BD		Cat.		%		Tattoo		Dam's MPPA		Dam's Age					
03-26-2022		1A		100		K811		96		2					
Pro\$	HB	GM	CED	BW	WW	YW	MILK	ME	HPG	CEM	STAY	Marb	YG	CW	REA
86	72	15	17	-3.5	60	94	24	-4	13	11	14	0.33	-0.01	0	0.09
56%	15%	91%	6%	21%	56%	59%	67%	20%	17%	3%	56%	72%	14%	99%	62%

BUEE PEACEMAKER 504		Calving Ease	***
SMJ PM RAMBO G801		BW	73
RSMJ RAMBO JULIET S800		WW	606
SMJ 801 PM PM K811		Grass Gain	2.3
BUEE PEACEMAKER 504		Scrotal	39.5
SMJ CEDAR PM H811		Frame Score	4.6
TR CEDAR AT315			

LOT 27

SMJ POLISHED PRODUCT BL K809 #4652315

BD		Cat.		%		Tattoo		Dam's MPPA		Dam's Age					
05-24-2022		1A		100		K809		100		2					
Pro\$	HB	GM	CED	BW	WW	YW	MILK	ME	HPG	CEM	STAY	Marb	YG	CW	REA
139	59	80	10	-0.2	65	110	25	7	16	7	14	0.59	-0.09	48	0.57
3%	34%	2%	86%	80%	35%	25%	57%	74%	2%	51%	55%	19%	3%	1%	2%

COLLIER FINISHED PRODUCT		Calving Ease	**
SPR POLISHED PRODUCT 0046		BW	83
SPR MISS STACK THE DRAW 6002		WW	724
SMJ POLISHED PRODUCT BL K809		Grass Gain	2.4
BHR BASES LOADED 5213		Scrotal	38.0
SMJ SISY BL H810		Frame Score	4.8
SPR MISS BEN 3058			



2 YEAR OLD BULLS

LOT 28

SMJ POLISHED PRODUCT BL K328 #4652329

BD		Cat.		%		Tattoo		Dam's MPPA		Dam's Age					
05-28-2022		1A		100		K328		107		2					
Pro\$	HB	GM	CED	BW	WW	YW	MILK	ME	HPG	CEM	STAY	Marb	YG	CW	REA
123	79	43	13	-0.2	79	129	25	7	16	9	16	0.48	0.1	31	0.2
9%	8%	39%	42%	80%	4%	4%	56%	75%	3%	14%	30%	36%	67%	22%	36%

COLLIER FINISHED PRODUCT
SPR POLISHED PRODUCT 0046
SPR MISS STACK THE DRAW 6002
SMJ POLISHED PRODUCT BL K328
BHR BASES LOADED 5213
SMJDELLA BL H258
AMBER LIGHT CONQUEROR 605

Calving Ease	***
BW	83
WW	676
Grass Gain	2.6
Scrotal	36.5
Frame Score	5.0

LOT 29

SMJ 801PM BL K307 #4652313

BD		Cat.		%		Tattoo		Dam's MPPA		Dam's Age					
03-23-2022		1A		100		K307		105		2					
Pro\$	HB	GM	CED	BW	WW	YW	MILK	ME	HPG	CEM	STAY	Marb	YG	CW	REA
90	79	10	13	-0.3	76	119	29	7	15	10	16	0.23	0.05	21	0.04
50%	8%	95%	44%	79%	7%	11%	26%	71%	7%	9%	27%	91%	43%	64%	71%

BUEE PEACEMAKER 504
SMJ PM RAMBO G801
RSMJ RAMBO JULIET S800
SMJ 801PM BL K307
BHR BASES LOADED 5213
SMJ DENISE BL H307
SMJ DENISE RAMBO CBB Z312

Calving Ease	**
BW	91
WW	739
Grass Gain	0.7
Scrotal	38.0
Frame Score	4.6



BRED HEIFERS

LOT 30

SMJ INA DEFEND K806

#4652251

BD		Cat.		%		Tattoo		Dam's MPPA		Dam's Age					
03-23-2022		1A		100		K806		97		6					
Pro\$	HB	GM	CED	BW	WW	YW	MILK	ME	HPG	CEM	STAY	Marb	YG	CW	REA
91	72	18	22	-7.8	60	90	29	-4	10	11	17	0.46	0.09	11	-0.01
49%	14%	87%	1%	1%	53%	67%	22%	20%	78%	2%	26%	40%	63%	91%	81%

5L DEFENDER 560-30Z		Calving Date	3/20/2024
KUHN'S DEFENDER D043		BW	55
KUHN'S BOND GIRL Z067		WW	637
SMJ INA DEFEND K806		Service Sire	FEDDES 401K 2214 #4631719
LSF SRR IMPECCABLE 3150A			
SMJ INA MMS IMPECCABLE D800			
SMJ INA RAMBO MS B801			

LOT 31

SMJ CARLY POLISHED PROD K332

#4652333

BD		Cat.		%		Tattoo		Dam's MPPA		Dam's Age					
03-19-2022		1A		100		K332		98		2					
Pro\$	HB	GM	CED	BW	WW	YW	MILK	ME	HPG	CEM	STAY	Marb	YG	CW	REA
114	77	37	12	-0.9	72	111	23	3	16	8	16	0.43	0.03	32	0.27
16%	9%	52%	60%	68%	13%	23%	79%	46%	3%	38%	34%	47%	29%	21%	23%

COLLIER FINISHED PRODUCT		Calving Date	3/20/2024
SPR POLISHED PRODUCT 0046		BW	85
SPR MISS STACK THE DRAW 6002		WW	606
SMJ CARLY POLISHED PROD K332		Service Sire	SPR DOUBLE STACKED 2034 #4684185
SMJ OSCAR JULIAN C811			
SMJ CARLY O811 H310			
SMJ CARLY RAMBO BL F310			

LOT 32

SMJ QUEEN 315 ULTIMATE K322

#4652239

BD		Cat.		%		Tattoo		Dam's MPPA		Dam's Age					
03-23-2022		1A		100		K322		93		7					
Pro\$	HB	GM	CED	BW	WW	YW	MILK	ME	HPG	CEM	STAY	Marb	YG	CW	REA
68	41	27	21	-5.4	55	85	23	14	10	12	14	0.39	0.05	16	0.16
83%	70%	73%	1%	4%	72%	75%	73%	95%	80%	1%	55%	57%	38%	78%	45%

BROWN ULTIMATE X7752		Calving Date	3/25/2024
SMJ ULTIMATE CM G315		BW	64
SMJ ABBEY RAMBO MAGNUM D315		WW	602
SMJ QUEEN 315 ULTIMATE K322		Service Sire	FEDDES 401K 2214 #4631719
FORSTER EPIC Y071			
SEEGER RED QUEEN 519			
SEEGER QUEEN 208			

BRED HEIFERS

LOT 33

SMJ INA BRUNSWICK K813

#4652305

BD		Cat.		%		Tattoo		Dam's MPPA		Dam's Age					
03-15-2022		1A		100		K813		106		3					
Pro\$	HB	GM	CED	BW	WW	YW	MILK	ME	HPG	CEM	STAY	Marb	YG	CW	REA
79	58	21	13	-2	74	104	31	-3	8	8	15	0.52	0.01	19	0.26
68%	37%	83%	53%	48%	11%	37%	11%	22%	96%	36%	49%	29%	23%	71%	25%

FEDDES BRUNSWICK D202												Calving Date		3/25/2024	
FEDDES BRUNSWICK B98-9255												BW		68	
FEDDES BLOCKANA 468 B98												WW		702	
SMJ INA BRUNSWICK K813												Service Sire		SPR	
BROWN COMMITMENT S7206														DOUBLE STACKED	
SMJ INA IMP COMMIT G813														2034	
SMJ INA OO IMPECCABLE D807														#4684185	

LOT 34

SMJ ABBEY CAPTAIN K326

#4652283

BD		Cat.		%		Tattoo		Dam's MPPA		Dam's Age					
03-27-2022		1A		100		K326		109		4					
Pro\$	HB	GM	CED	BW	WW	YW	MILK	ME	HPG	CEM	STAY	Marb	YG	CW	REA
64	49	15	9	1.8	82	131	32	19	10	5	18	0.23	-0.01	29	0.35
88%	55%	91%	93%	97%	2%	3%	8%	99%	80%	88%	12%	91%	15%	29%	13%

DKK CAPTAIN 434												Calving Date		3/25/2024	
DKK BRILLIANT 8115												BW		90	
DKK STARLETTE 320												WW		778	
SMJ ABBEY CAPTAIN K326												Service Sire		HBR	
SMJ OSCAR JULIAN C811														LEONIDAS	
SMJ ABBEY CM OS811 F315														#4497427	
SMJ ABBEY RAMBO MAGNUM D315															

LOT A

40 Commercial Open Heifers

Golden Valley, ND

Schriefer Red Angus

LOT B

20 Commercial Open Heifers

Belfield, ND

Travis & Kelsey Dukart 701-590-4142

LOT C

15 Commercial Open Heifers

Killdeer, ND

Rimrock Livestock - Lundberg Family 701-690-8731

2 YEAR OLD BULLS



DVAuction

Broadcasting Real-Time Auctions

www.dvauction.com

Watch & Bid online for FREE!

We are pleased to bring you real-time Internet bidding and a live broadcast of this sale through DVAuction. To watch or bid online, simply complete the following steps:

- Visit the DVAuction web site at www.dvauction.com
- Click on the "Create New Account" tab
- Enter a user name, password and your contact information.
- Complete the Banking Information. (If you are only interested in viewing you can skip this section)
- Select your Time Zone, Accept the Terms and Conditions and click "Create Account"
- Complete the process by answering a few questions, selecting your subscription choices
- Click on "Apply for Bidding" in the upper left corner of your screen to select the sales you wish to bid on
- Be sure to include a personal contact at your bank, we will contact them in order to get a credit reference.
- If you would prefer to be approved using your credit card, call (402) 316-5460.
- Please be sure to apply for bidding at least a day in advance of the sale-every effort will be made to process your application in a timely manner.

DVAuction will contact you once you have been approved to bid. We do not provide buyer numbers until you have purchased a lot in the sale, and that number is only usable for that auction. After the sale contact the sale owner or manager to make arrangements for payment and delivery of your online purchases.

For General Questions Please Contact Our Office:
(402) 316-5460 or support@dvauction.com

BRED HEIFERS

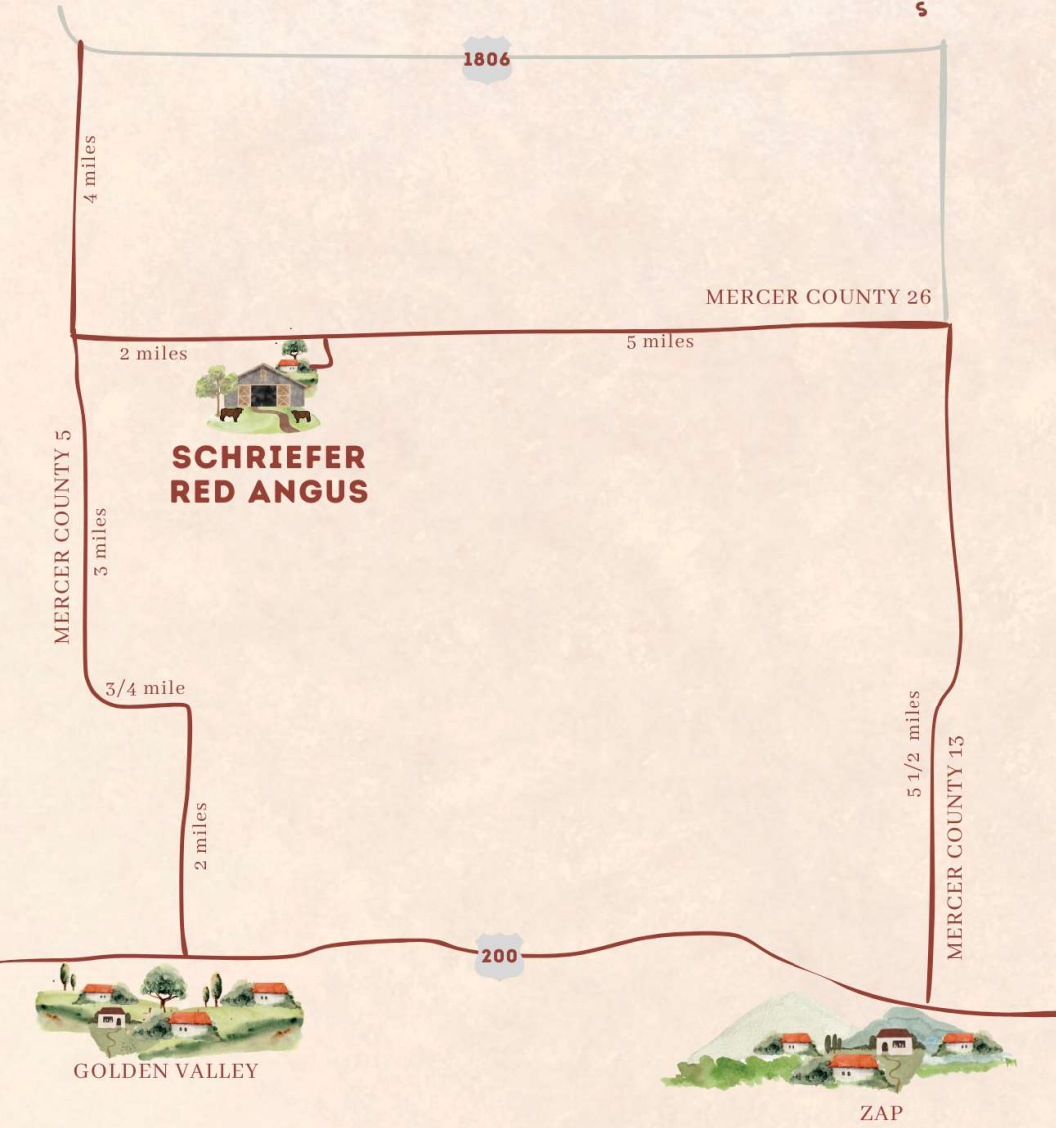


Follow Schriefer Red Angus

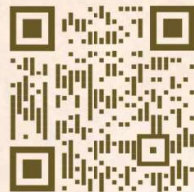
@Schriefer_Red_Angus



DIRECTIONS



**SCAN THE QR CODE WITH YOUR PHONE'S
CAMERA TO GET A LINK TO SCHRIEFER
RED ANGUS ON GOOGLE MAPS**



**SCHRIEFER RED ANGUS
PRODUCTION SALE**

Saturday, January 27th, 2024



*Our brand may be lazy,
but we guarantee our bulls are not.*

Schriefer Red Angus
321 70th Ave SW
Golden Valley, ND 58541

Please Bring This Catalog to the Sale!

For more info and videos, visit:
SchrieferRedAngus.com